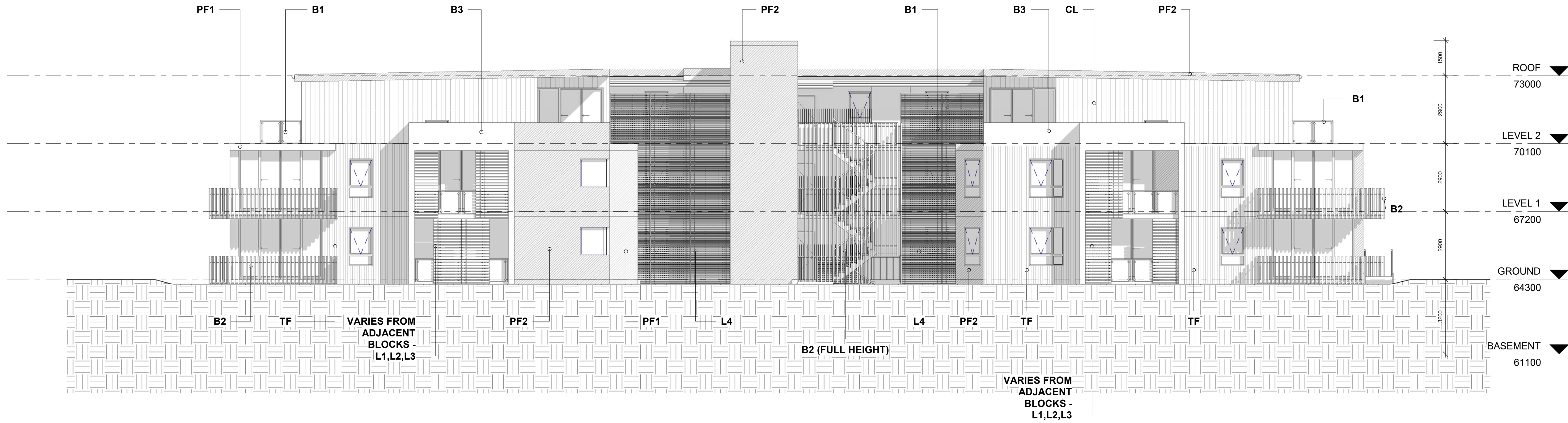


1 NORTH ELEVATION  
1 : 100

NOTE: THESE DRAWINGS ARE OF  
TYPICAL APARTMENT BLOCK.  
NATURAL GROUND LINE,  
PROPOSED GROUND LINE AND  
HEIGHT LINES WILL VARY FOR  
EACH. PLEASE REFER TO DA08 &  
DA50



2 SOUTH ELEVATION  
1 : 100

#### SCHEDULE OF FINISHES

**AF** - ALUMINIUM FRAMED SLIDING WINDOWS -  
WOODLAND GREY  
**AFA** - ALUMINIUM FRAMED AWNING WINDOWS -  
WOODLAND GREY  
**AFSD** - ALUMINIUM SLIDING DOOR -  
WOODLAND GREY

**CL** - CLIPLOCK 700HS METAL ROOF -  
WOODLAND GREY  
**TF** - NATURAL TIMBER FINISH -WEATHERTEX

**PF1** - PAINT FINISH RENDERED MASONRY  
BROADWALL, AC SHEETING - LIGHT GREY  
**PF2** - PAINT FINISH FASCIA BOARD AND  
GUTTER AND 150 DIA HALF ROUND GUTTER -  
WOODLAND GREY  
**PR3** - PAINT FINISH BALUSTRADE AND  
SURROUND - WHITE

(PF 1,2 & PR 3 TO INC. CONTRAST TO  
ADJACENT BLOCKS)

**B1** - POST AND RAIL / GLASS PANEL  
BALUSTRADE - LIGHT GREY  
**B2** - VERTICAL METAL 50MM SQ. RODS ON  
FRAME PROUD OF SOFFIT - LIGHT GREY  
**B3** - MASONRY - PAINT FINISH RENDERED -  
WHITE

**L1** - POWDERCOATED METAL LOUVRES - DIRTY  
YELLOW  
**L2** - POWDERCOATED METAL LOUVRES - LIGHT  
GREY  
**L3** - POWDERCOATED METAL LOUVRES -  
TIMBER BROWN  
**L4** - POWDERCOATED METAL LOUVRES - LIGHT  
GREY

NOTE - LOUVRE COLOR TYPES (X4) TO BE  
APPLIED CONSECUTIVELY TO APARTMENT  
BLOCKS

#### CONSTRUCTION NOTES

BASEMENT INCL. SUPPORT COLUMNS AND  
APARTMENTS FLOORS TO BE CONCRETE WITH  
AFS OR SIMILAR STRUCTURAL WALLS TO  
ABOVE GROUND

NON STRUCTURAL WALLS TO HEBEL  
ROOF TO BE STEEL FRAMED WITH PDR.  
COATED CLIPLOCK ROOFING INCL. UPPER  
FLOOR EXTERAL WALL CLADDING

REFER TO BASIX/NATHERS FOR ENERGY AND  
SUSTAINABILITY COMMITMENTS INCLUDING  
3000 LTR WATER STORAGE ADJACENT LIFT  
SHAFT

POOL TO BE STANDARD CONCRETE  
CONSTRUCTION TO ENG DETAILS WITH METAL  
PERIMETER STRUCTURE OVER ON 100 SQ  
COLUMNS TO HOUSE ADJUSTABLE VERGOLA.  
PULL DOWN PLASTIC ZIP UP SIDES WILL  
FACILITATE ALL WEATHER CONDITIONS

B	08.06.2017	ADDITIONAL INFORMATION
A	09.06.2017	DEVELOPMENT APPLICATION SET
NO.	DATE:	DETAILS:

Amendments:

**Stephen Jones Associates**

**p. 02 9977 2240**  
**m. 0418 866 784**  
**e. sj@stephenjonesassociates.com**  
**w. www.stephenjonesassociates.com**

Registered Architect Gary Finn No. 5774 (NSW)

Project:  
**SENIORS LIVING DEVELOPMENT**  
**LOT 1, DP 780801**  
**WINDWARD WAY, MILTON NSW 2538**

Drawing:  
**APARTMENTS – ELEVATIONS 1**

Scale: 1:100 @A1 Job No: 1516 Drawing No:  
Date: 08.06.2017  
Drawn: SJ  
**DA44**  
This drawing is copyright and must not be retained, copied or used without consent of designer.